



# Renad Tower

Brochure of a new project on the Al Reem island



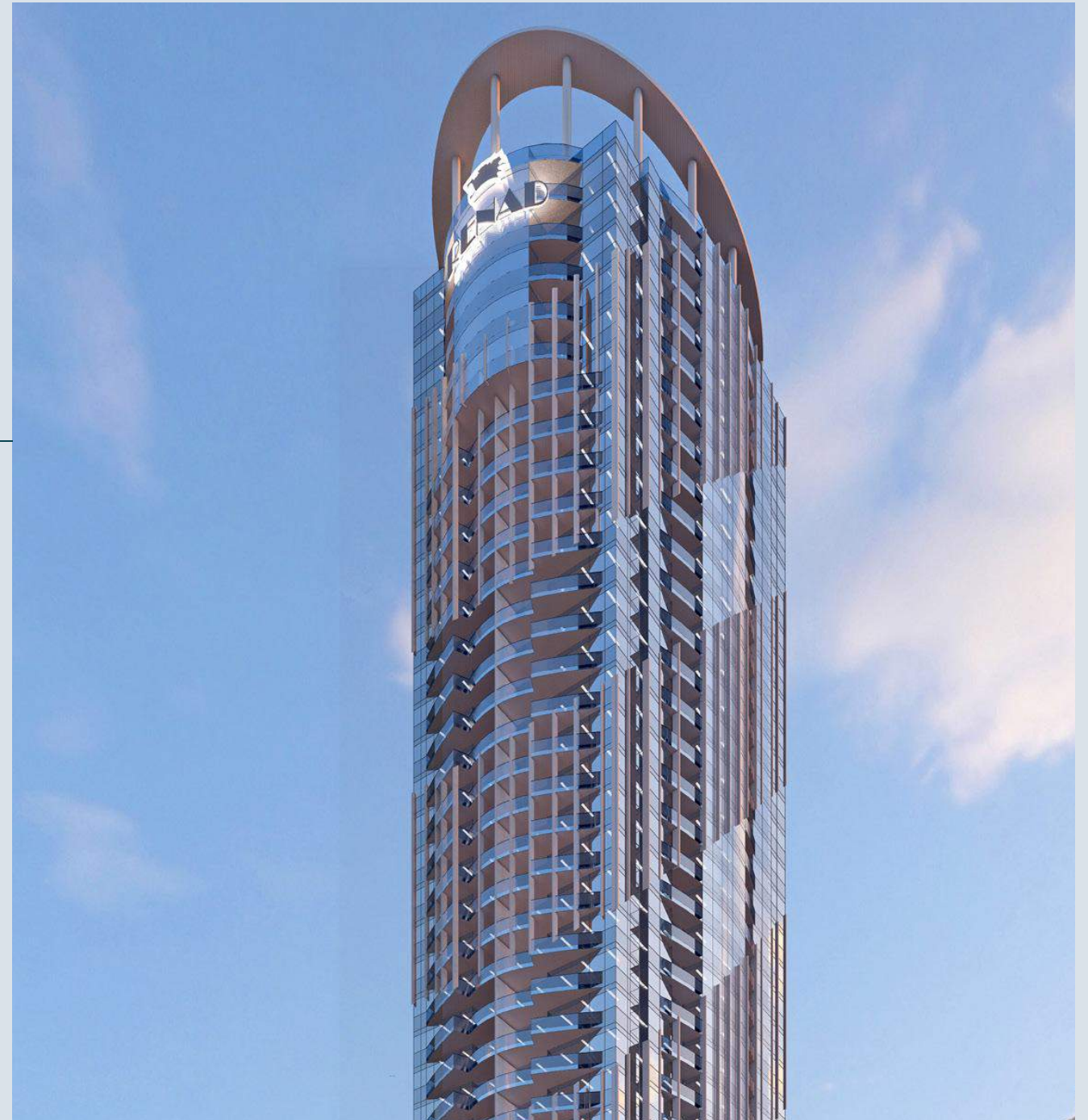
# Named after the flower

+971 (4) 581-2364

about



Renad Tower is a 37-story residential complex strategically located opposite the Galleria Mall on Al Reem Island in Abu Dhabi. Named after a captivating desert flower renowned for its extraordinary beauty, the project is being constructed with a dedication to embodying the same exceptional allure.



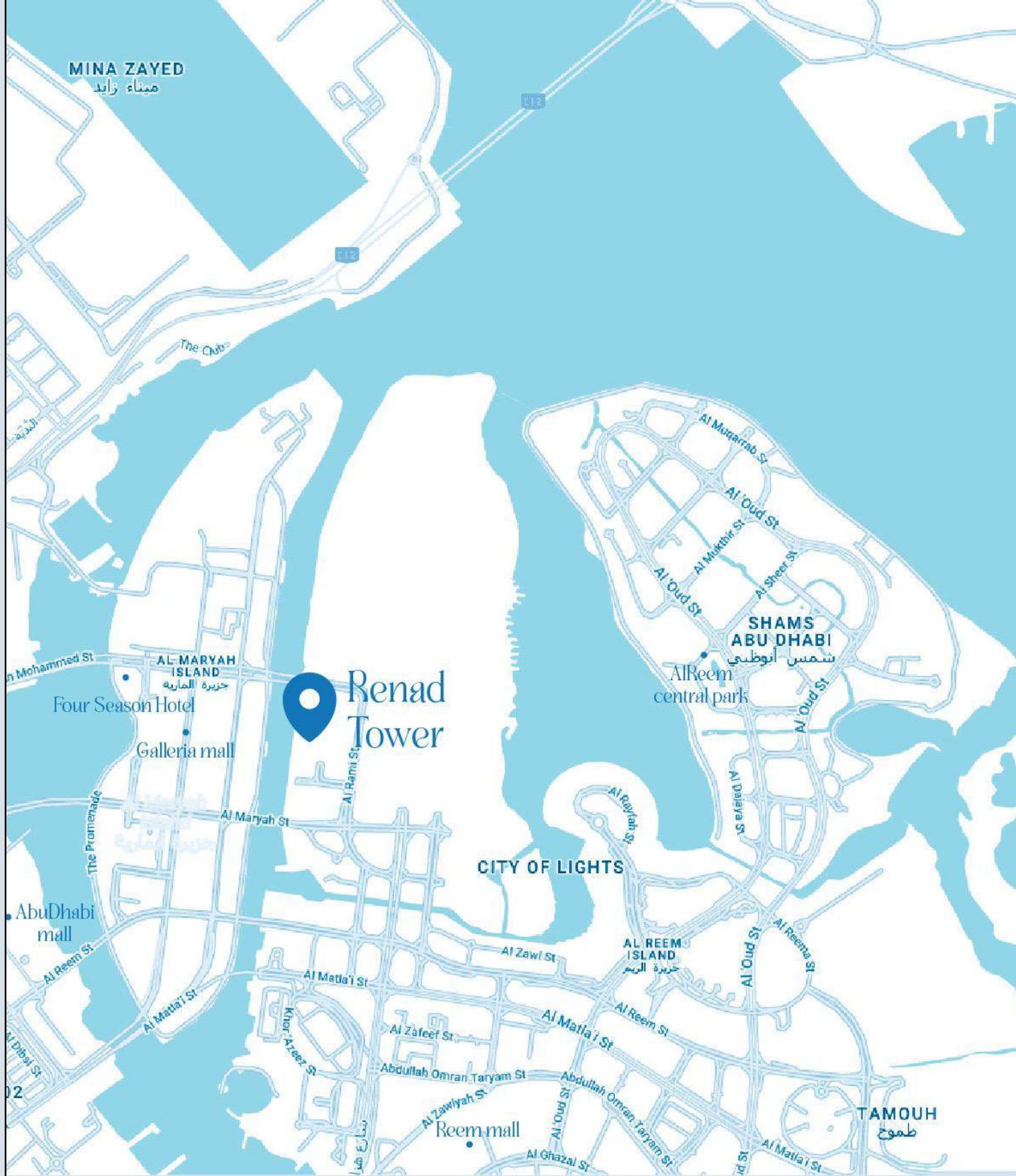




# Life on island

Al Reem Island is a natural archipelago divided by waterways into three distinct islands, which are connected by convenient bridges. One of these islands is covered with mangrove forests and designated as a nature reserve. The other islands feature the Sorbonne University campus, prestigious schools, yacht marinas, and a large shopping mall. Residents can enjoy a range of leisure options, including parks, promenades, fitness centers, and swimming pools.





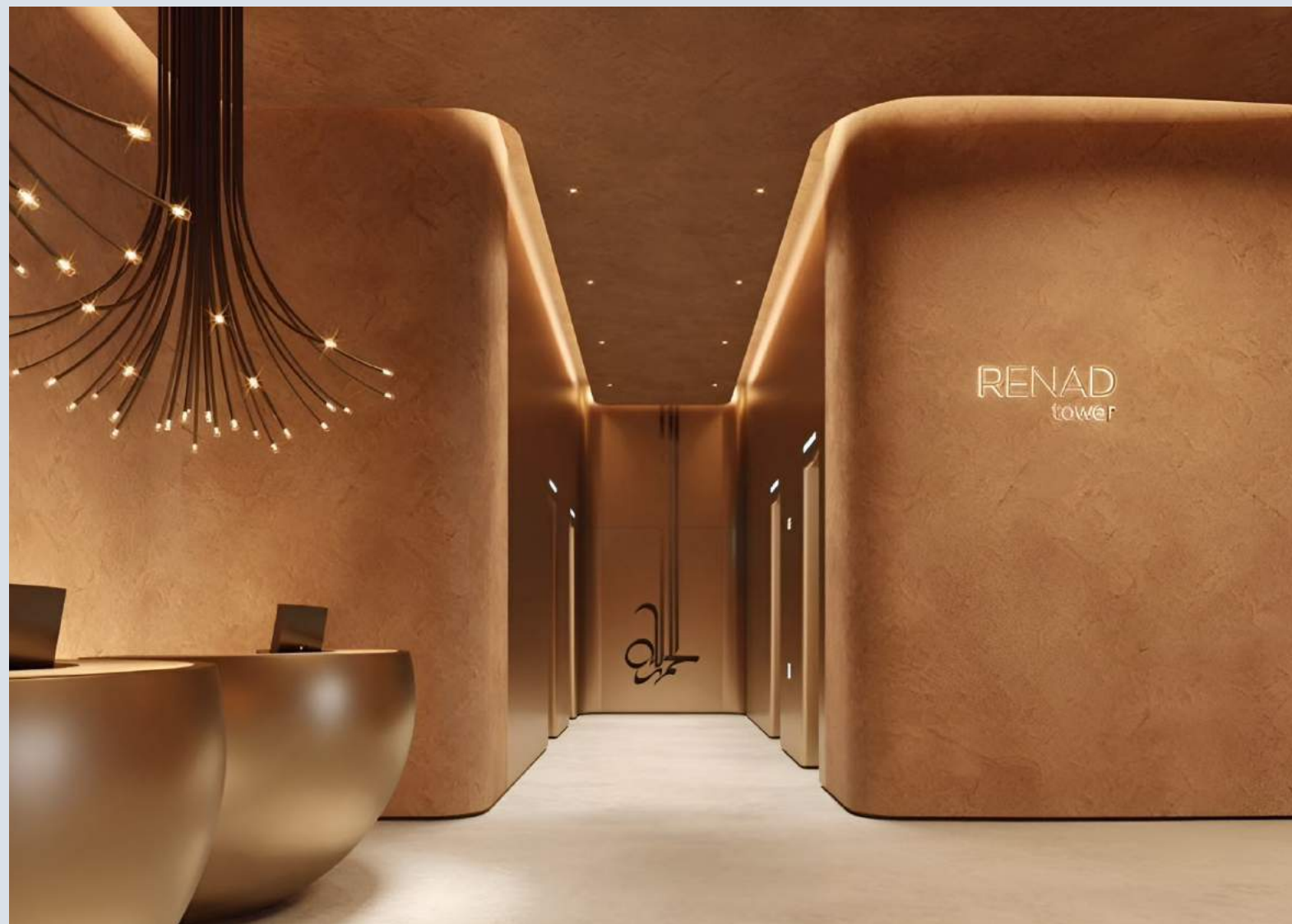
# 5 minutes to the main road

## By car

- 11 minutes to Louvre Abu Dhabi
- 18 minutes to Al Bateen Executive Airport
- 26 minutes to Yas Island

The residential complex is situated along the canal, opposite the large Galleria Mall shopping center. Renad Tower is connected to the mainland by bridges, allowing you to reach the central Abu Dhabi island in just 5 minutes, including access to one of the main roads, E10, which provides quick travel to key locations across the emirate.





Guests are greeted by a modern lobby designed in sandy tones with golden accents





The project features fully furnished apartments with 1 to 3 bedrooms.

+971 (4) 581-2364



# Modern fully furnished interiors

+971 (4) 581-2364

interiors



The residences are finished in a modern style, predominantly featuring shades of gray, beige, and blue. The kitchens come with black and dark gray cabinetry, while the living rooms and bedrooms are carpeted.





# Private balconies & panoramic windows



Each apartment features its own balcony and panoramic windows that not only fill the spaces with light but also offer stunning views of the bay.

+971 (4) 581-2364



# The one-bedroom apartments layout

+971 (4) 581-2364





# The two-bedroom apartments layout

+971 (4) 581-2364







# The three-bedroom apartments layout



# Swimming pool with lounge area

Renad Tower



On a hot day, unwind by the expansive rooftop podium pool, where you can cool off in the refreshing water or sunbathe in the designated lounge area with panoramic views of the island.

+971 (4) 581-2364



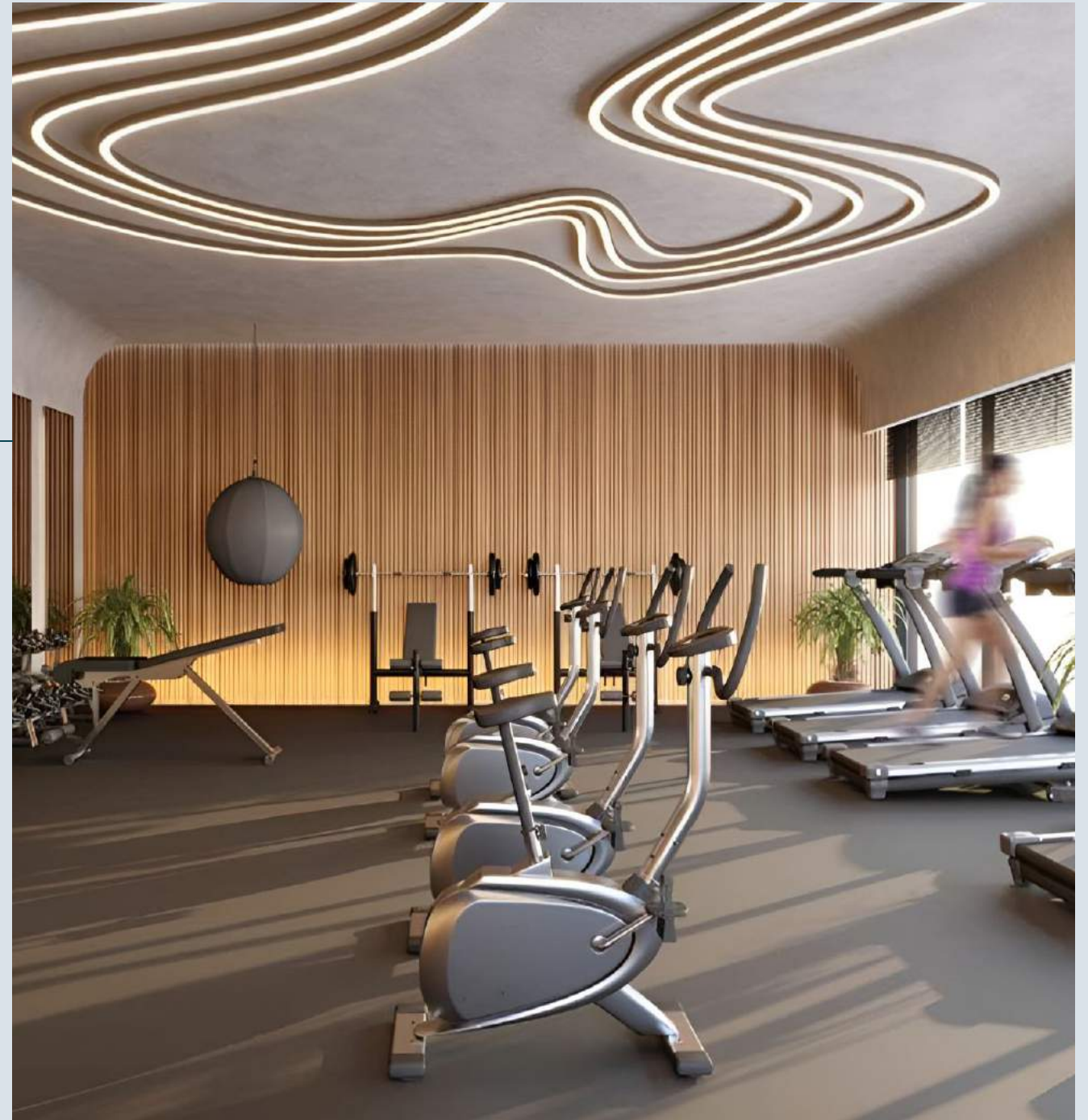
# Modern gym and jogging paths

+971 (4) 581-2364

amenities



To stay fit and healthy, residents have access to a state-of-the-art gym and outdoor walking and jogging trails.







## Children's playground

For the youngest residents, a children's playground is provided, where they can have fun and play safely outdoors.



## BBQ area

Invite your loved ones and enjoy an evening barbecue at the specially equipped area.



# Schools and universities nearby

+971 (4) 581-2364

Near the residential complex, you'll find a variety of premium educational institutions, offering a selection of schools and universities to suit your needs.

Repton School



AlNahda National School



ICS Mushrif







# Protected Mangrove Park

to the protected mangrove forests, a hallmark of Abu Dhabi. This natural habitat positively impacts the local ecology. Residents enjoy views not only of the sea but also of the lush mangrove trees. In the future, the sanctuary is set to be connected to the city with well-designed promenades.



# Al Reem Beach and promenades

20 min by car

infrastructure



Part of the island's shoreline is designed as a promenade, perfect for morning jogs or leisurely walks along the water. The islands also boast several excellent beaches, such as Al Reem Beach, where you can enjoy views of the sea and the mangrove park.



+971 (4) 581-2364





# Reem Mall

5 min by car

Island residents don't have to worry about where to buy a new kitchen set, an evening dress for a special event, or indoor plants. They simply drive to the expansive Reem Mall, just 5-7 minutes drive away. At the mall, they can shop, catch a movie, enjoy a meal at a restaurant, or take their children to a recreational center.



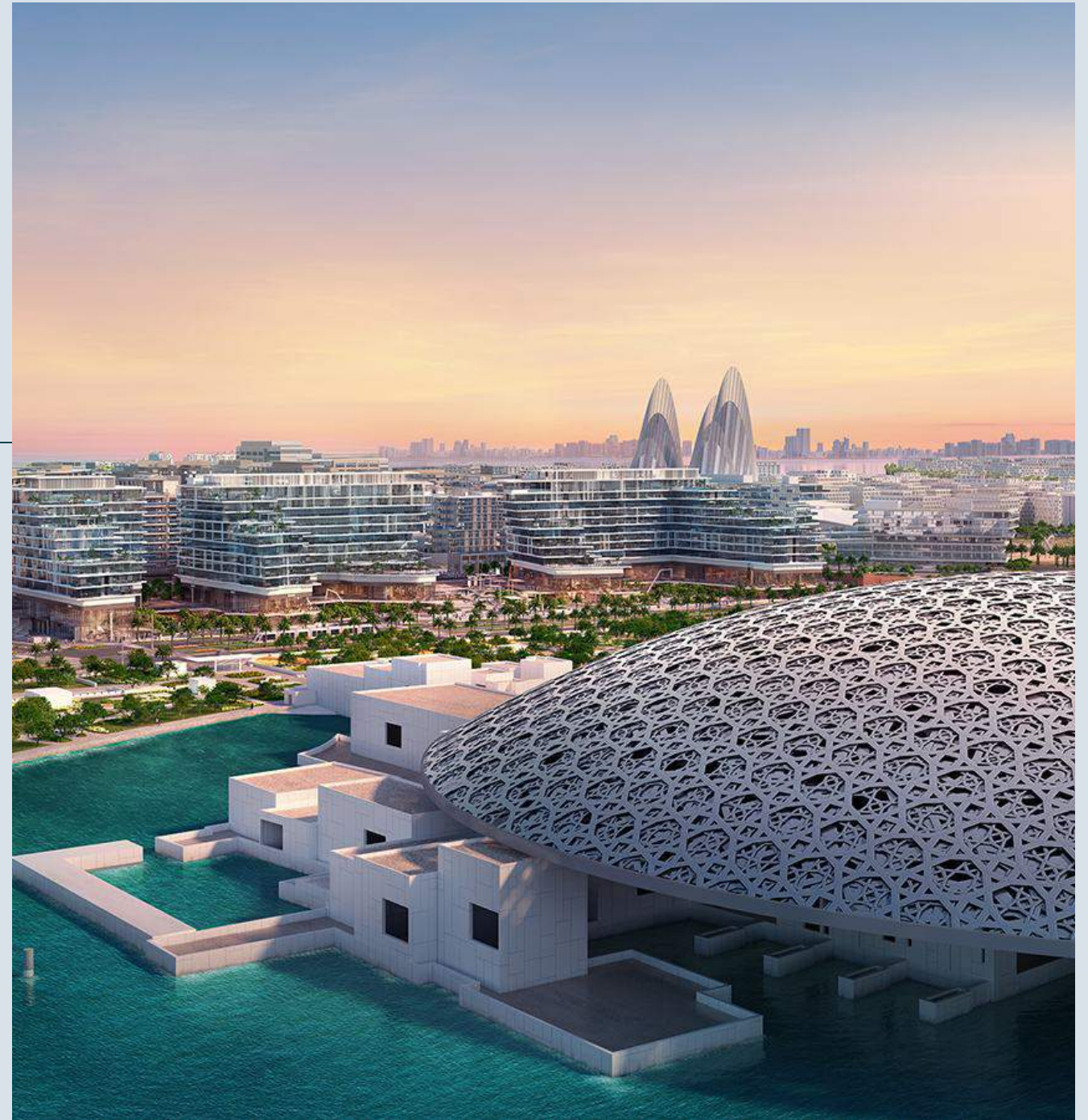
# Louvre Abu Dhabi

+971 (4) 581-2364

12 min by car

infrastructure

This is the only branch of the Louvre outside of France, located in Abu Dhabi. The museum's architecture, featuring water channels and a majestic latticed dome, creates the impression of being under the open sky amidst the sea. Its unique collection spans the entire history of humanity, making it the first museum of its kind not only in the United Arab Emirates but also in the Middle East.







# Project developer — Tiger Group

Tiger Group was founded in 1976 to participate in the construction of the United Arab Emirates. In addition to project construction and real estate development, the company is involved in facilities management, hospitality, manufacturing, education and healthcare. Its portfolio includes 250 finished objects and employs 6 thousand employees.



# Payment plan

+971 (4) 581-2364

10%  
on booking

10%  
4 months after  
booking

50%  
in monthly payments  
during construction

30%  
in monthly payments over 2 years  
after construction completion





The project will be  
ready in the Q3 of 2026







Book a viewing by phone  
number +971 (4) 581-2364



  
EUROPEAN  
PROPERTY  
AWARDS  
  
Best real  
estate agency  
Moscow, Russia  
2018-2019

  
EUROPEAN  
PROPERTY  
AWARDS  
  
Best real  
estate agency  
Moscow, Russia  
2020-2021

  
URBAN  
AWARDS  
2020  
  
Best real  
estate agency  
2020

  
Whitewill

Oman  
**+971 (4) 581-2364**

# TRUST WHITEWILL FOR PROPERTY SEARCH IN OMAN

Whitewill is a real estate expert in UAE, offering the top 100 luxury, premium, and business-class projects for living and investments. You can download the complete catalog on our website, or submit a request for a callback - brokers will prepare a selection of 5 apartment, apartment, or villa options within half an hour, all free of charge.

